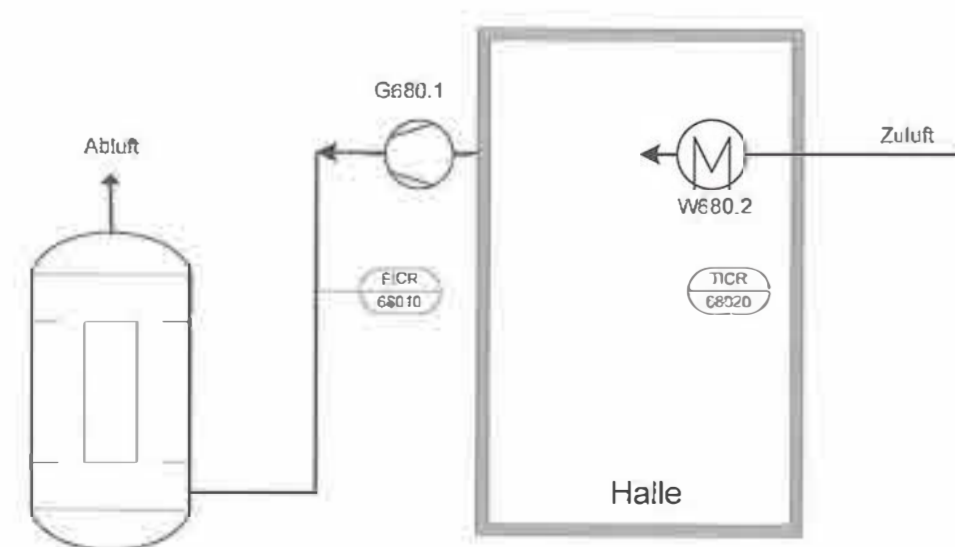
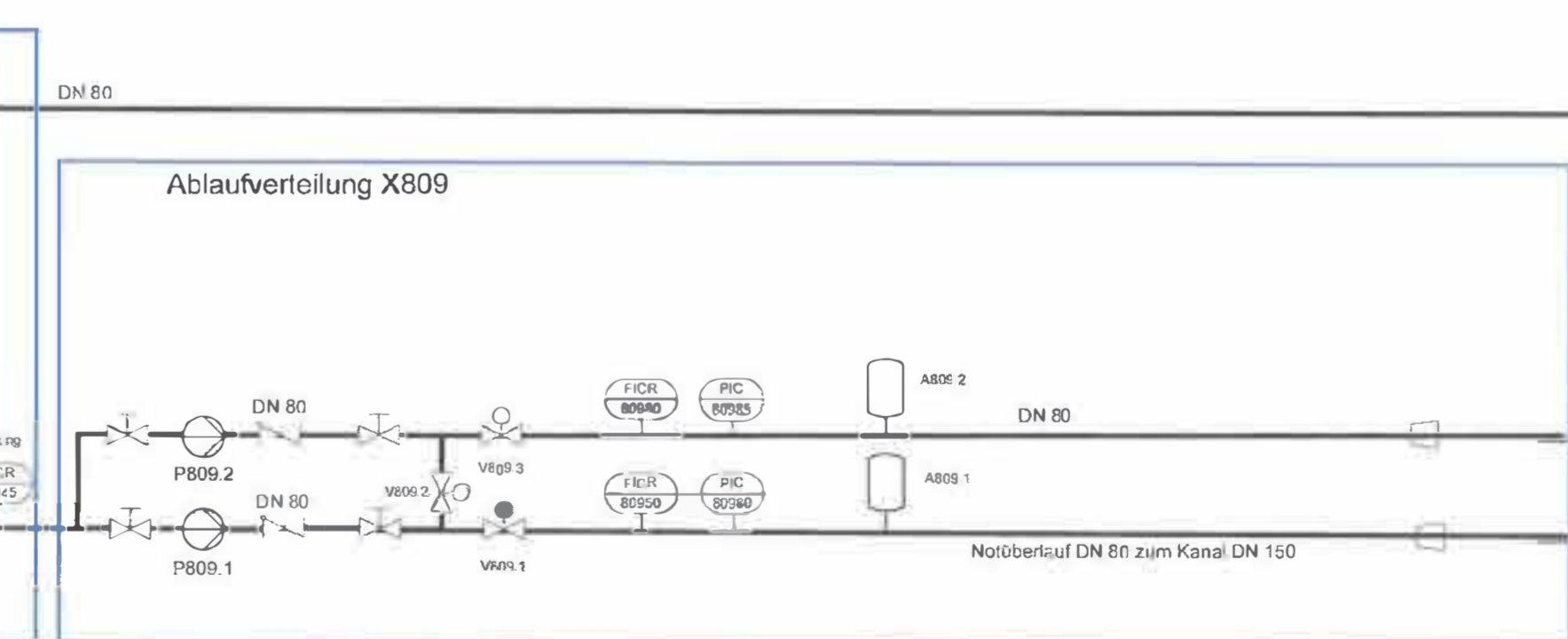
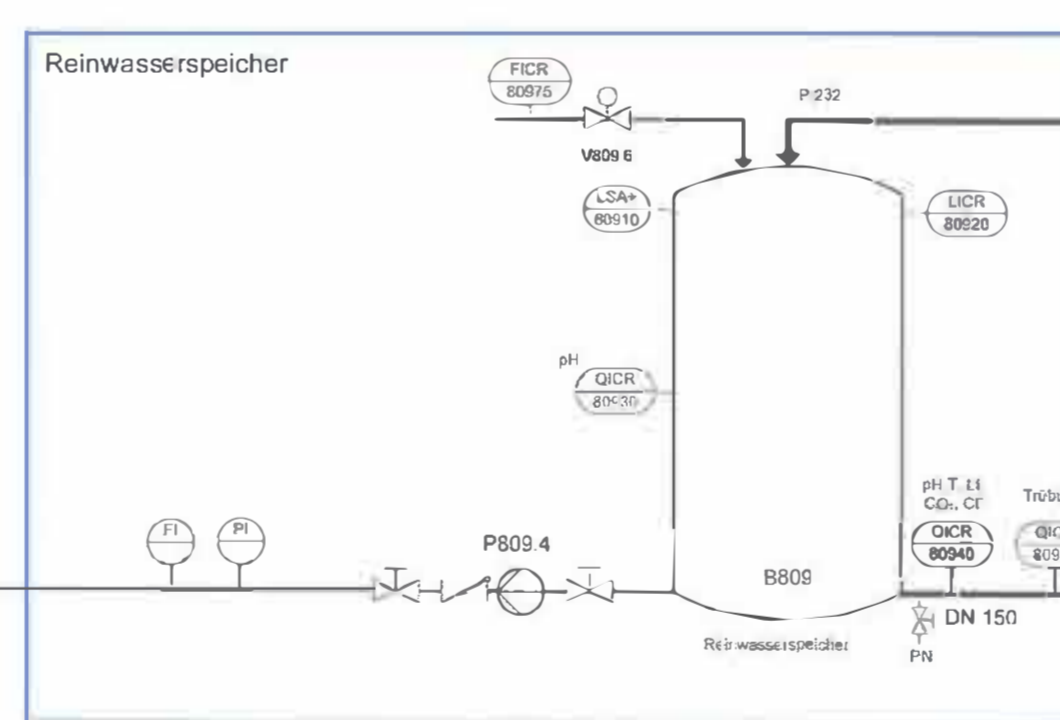
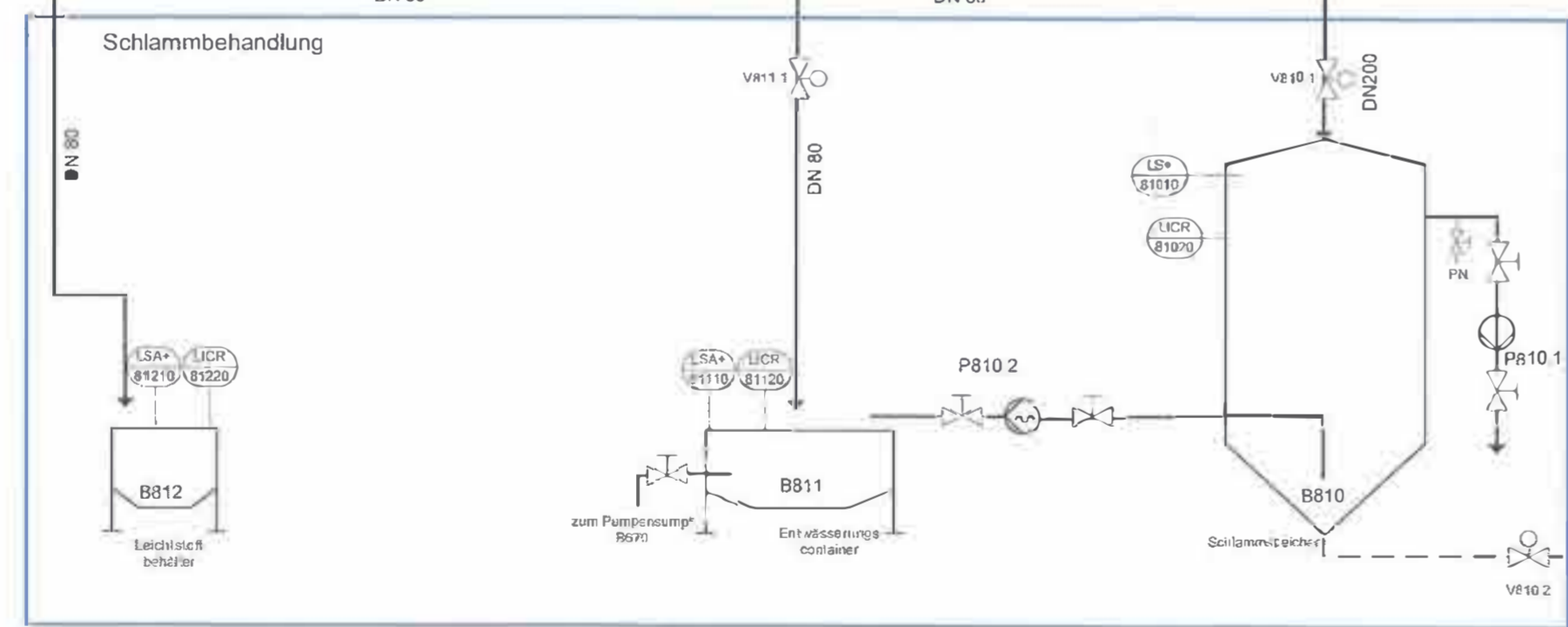
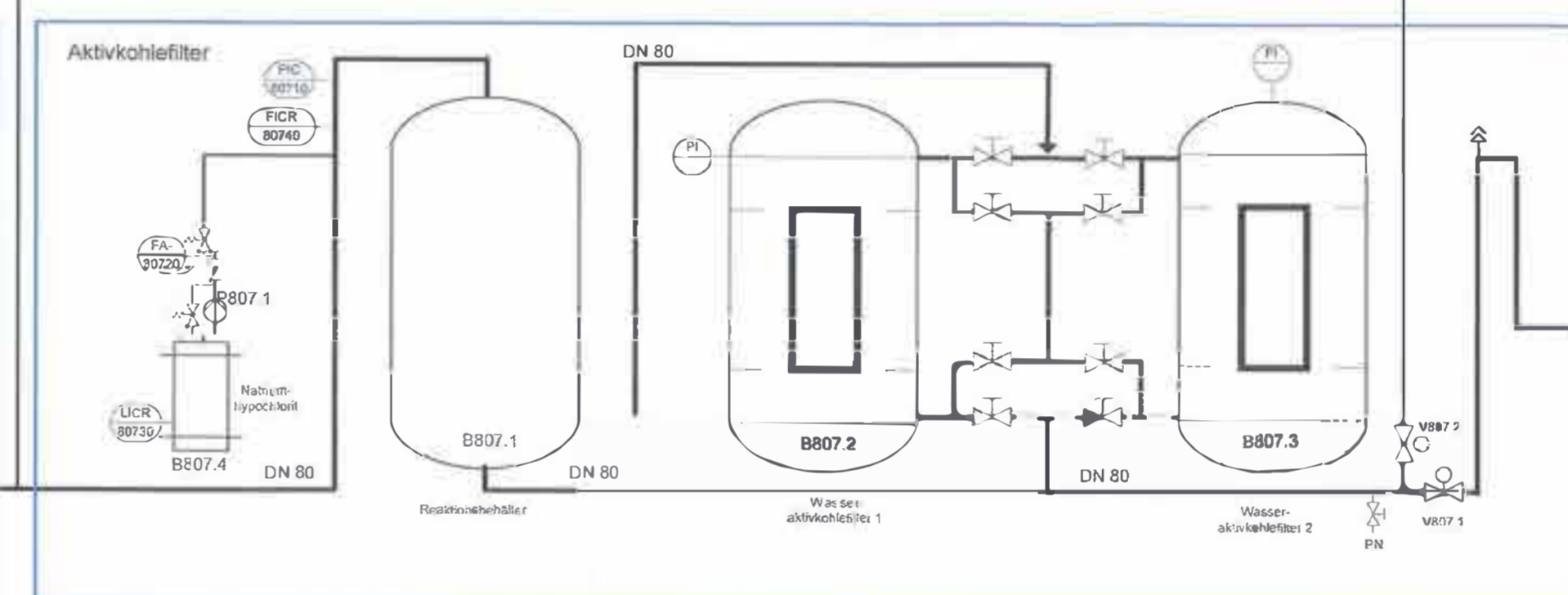
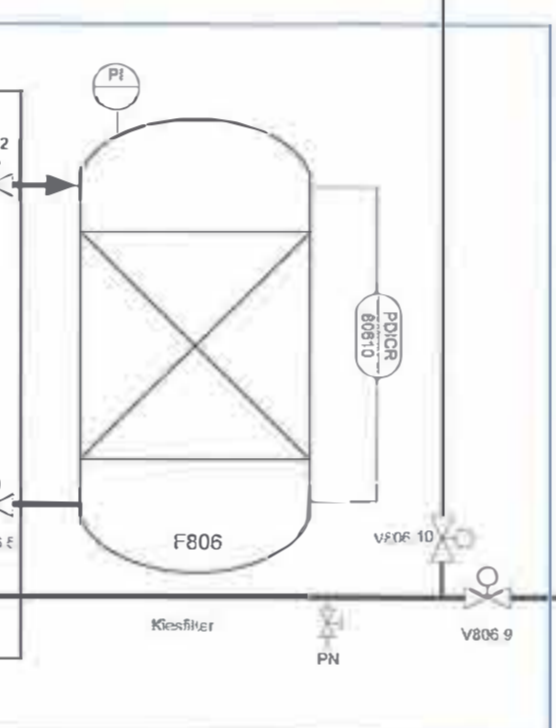
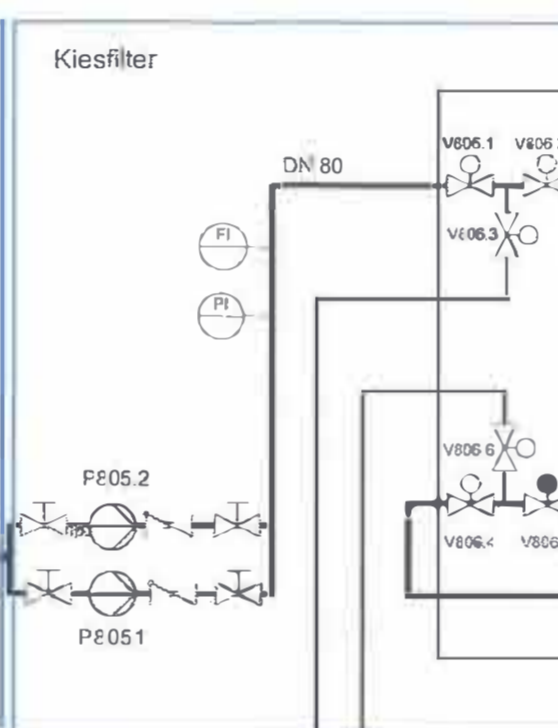
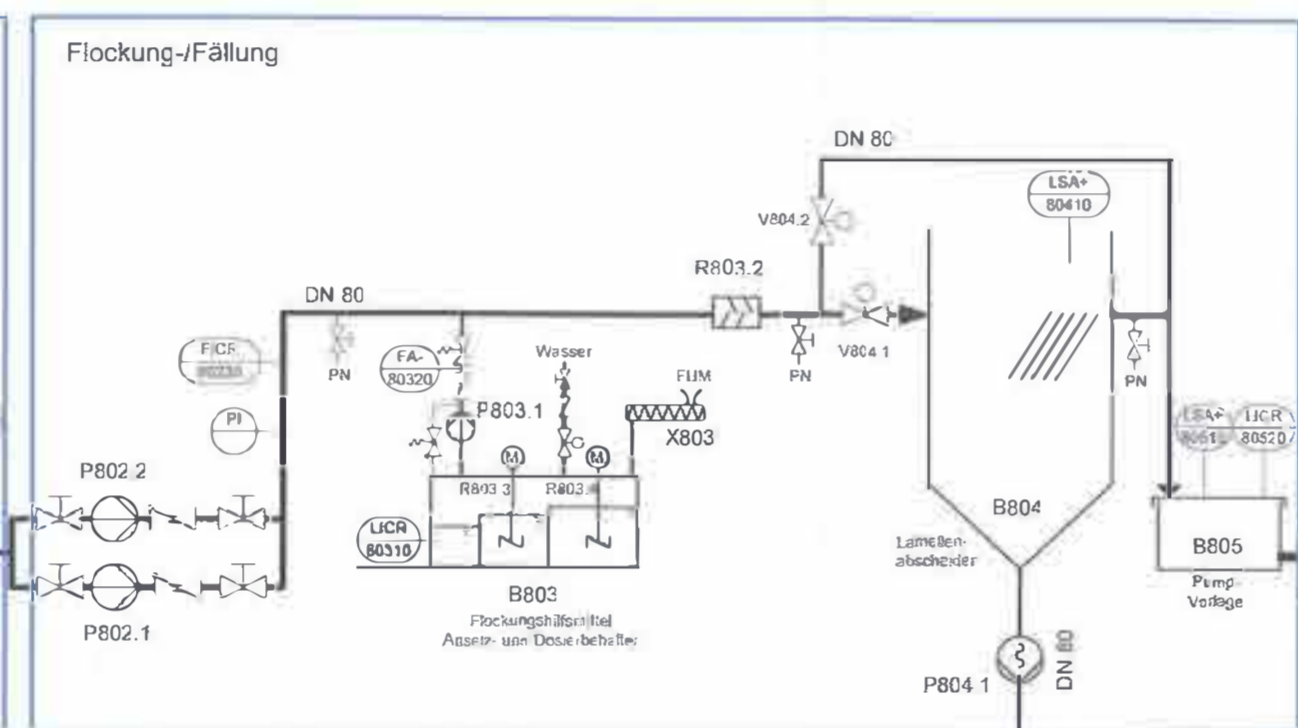
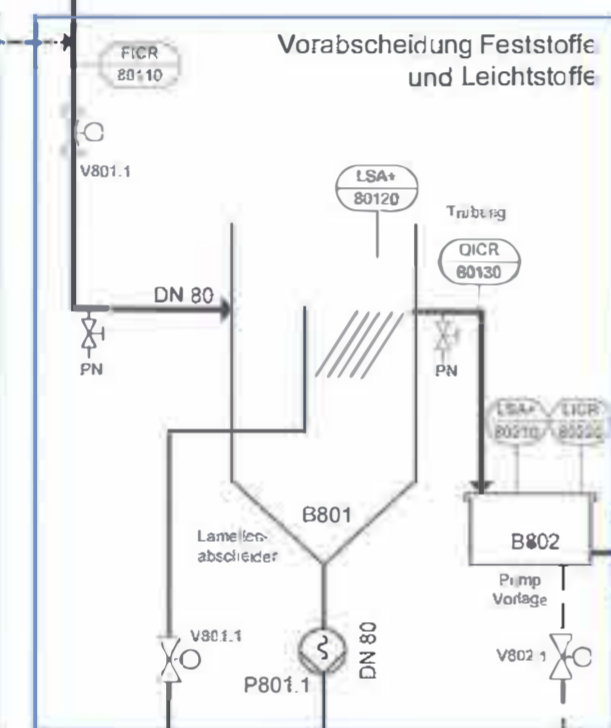
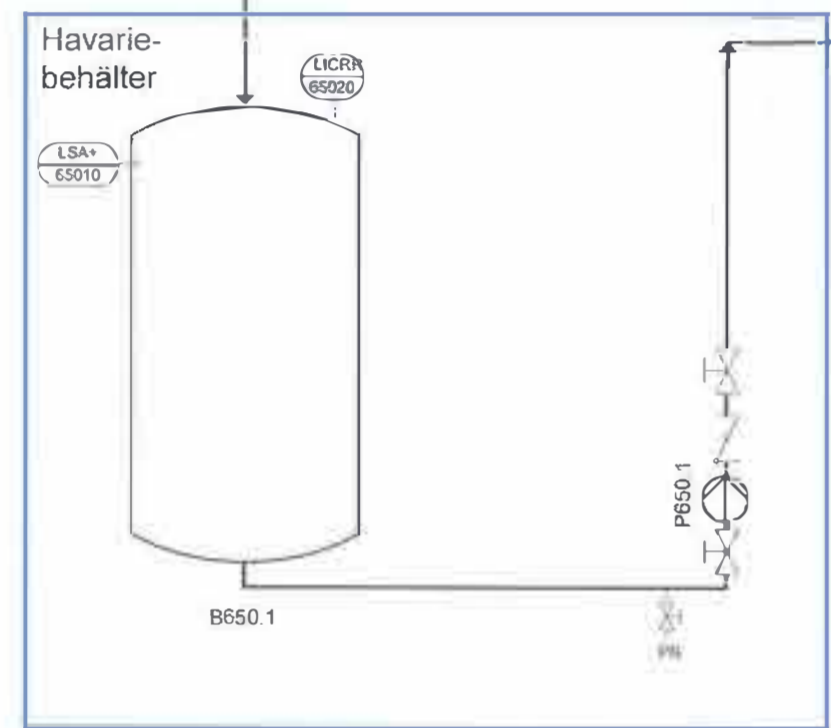
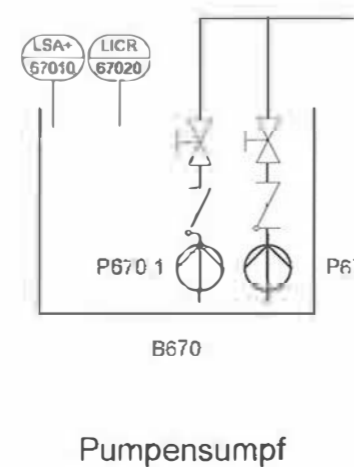


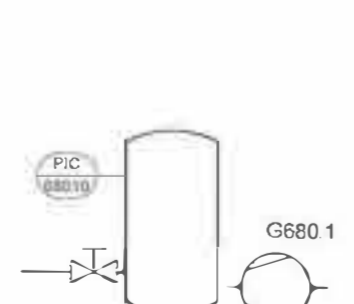
Wasseraufbereitung Zulauf 5 I/s
Tunnelwasser, Sprengvortrieb,
Wasser aus offene Startgruben,
Vorabscheidung der Feststoffe auf
Baustelle mittels Ansetzcontainer
CO₂-Zugabe zur Vorneutralisation



Be- und Entlüftung Halle



Pumpensumpf



Steuerluft

